

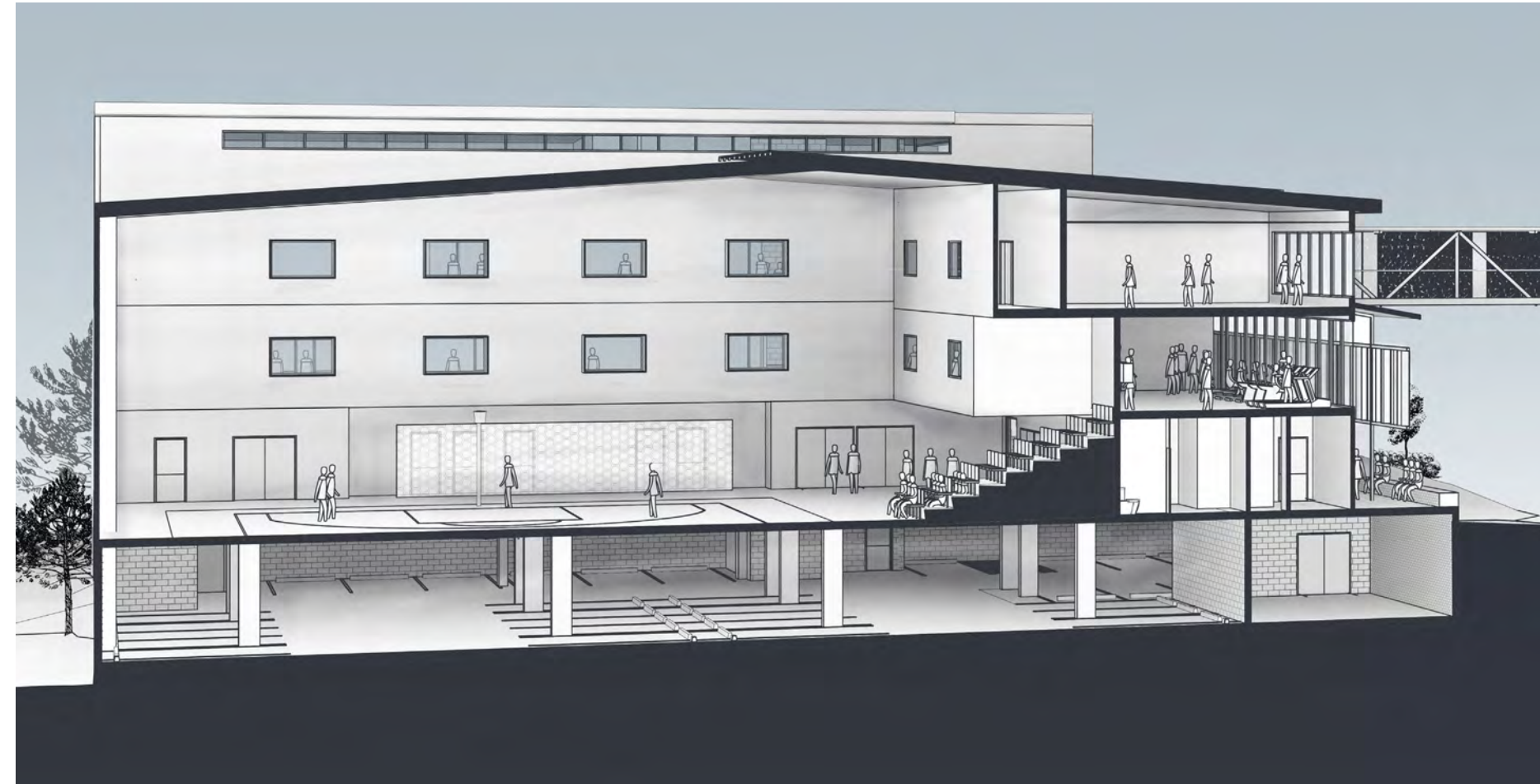
Multi-purpose Building

Return Brief

Requirements from the Architectural Services Proposal and further refined following feedback and stakeholder concept design consultation meetings held on the 18th July 2017 & 29th August 2017

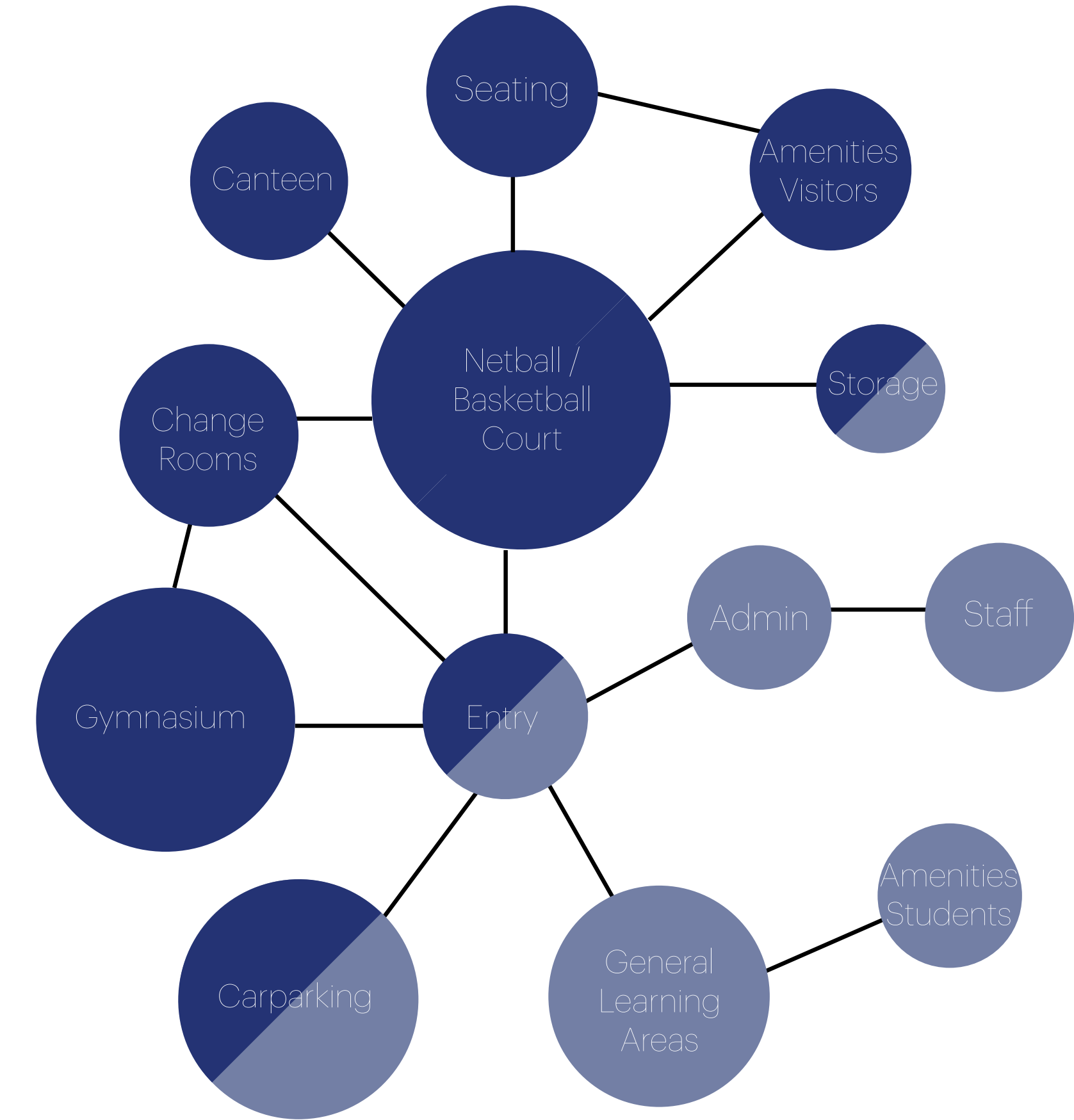
Requirements

- Multi-line court capable of accommodating:
 - 1 x Basketball Court
 - 1 x Netball Court
 - 2 x Volleyball Courts
 - 4 x Badminton Courts
- Ability to use hall for exams
- Storage - 3 zones
- Gymnasium
 - Weights & Cardio
 - Gym to have visual presence from Edmondstone St
- Amenities - change room facilities to include showers
- Canteen
- Basement carparking
- Classrooms:
 - 2 x 66m² GLA's - with operable wall
 - 2 x 90m² GLA's - with operable wall
- Function space:
 - Kitchenette
 - Toilet
- Bridge to connect to main campus



Programme Adjacencies

- Spaces for the Public & BSHS
- BSHS Uses Only





View from Edmondstone St

Materiality

Brick elements dispersed throughout are a response to local and school heritage buildings



Sample
Brickwork



H Block



A Block



Local
Character
Building

Shading Element

Provides shade to the gym while allowing a level of transparency and movement



Feature Colour

Picking up on existing heritage features and abstraction of school colour



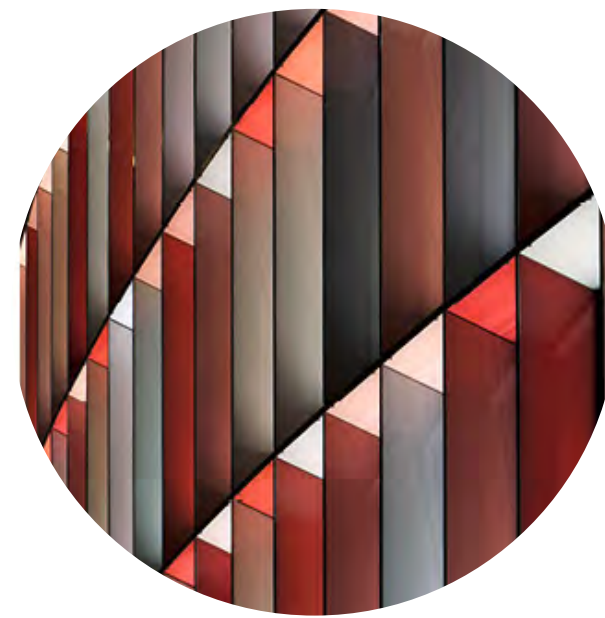
Protection & Transparency



Filtered Light



Colour & Movement



Character



Context



School Colours

