



# Brisbane State High School

## 2026 Aspire Entry Maths and Science Sample Paper

First name:			
Surname:			
Primary School:			
Date/s	07/10/2025		
Conditions	Complete in under supervised conditions		
Duration	30 minutes	Perusal/planning	2 minutes
Other	Calculator permitted		
<b>Instructions to complete this examination</b>			
Answer questions in the space provided on the test paper. Show <b>all</b> working.			

Copyright in the template of this document belongs to the QCAA and ACARA and is licensed [Creative Commons Attribution 4.0](#). The QCAA requires no attribution. For the latest information and additional terms of use of the ACARA's content, please check the [Australian Curriculum website](#) and its [copyright notice](#). Content provided by Brisbane State High School belongs to the school. Contact the school to obtain permissions to reuse its content, where required.

**Question 1 (1 mark/s)**

There are 22 people at a party. The cost is \$24 per person, plus \$40 extra for the cake.

Which of these shows how to calculate the cost of the party in dollars?

- A.  $(40 + 24) \times 22$
- B.  $(22 \times 24) + 40$
- C.  $22 + 24 + 40$
- D.  $22 \times 40$

**Question 2 (1 mark/s)**

A survey is conducted to determine the number of children who have a mobile phone and/or a computer. The results are shown below.

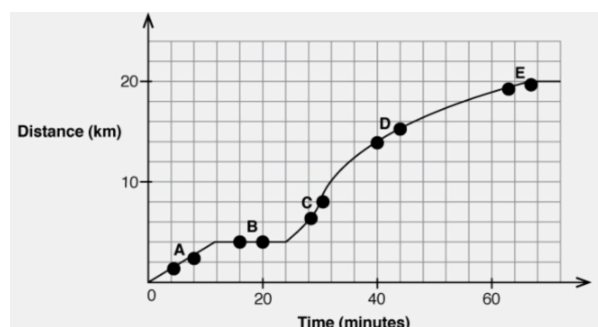
	Computer	No Computer
Mobile phone	63	42
No mobile phone	35	36

How many children have a mobile phone but not a computer?

- A. 7
- B. 27
- C. 35
- D. 42
- E. 62

**Question 3 (1 mark/s)**

Ziggy travelled 20 km one morning on his bike ride. His smart watch recorded his progress as a graph.



Which section of the graph shows where Ziggy stopped for a break?

- A. A
- B. B
- C. C
- D. D
- E. E

**Question 4 (2 mark/s)**

This year Alex saved \$334 from his part-time job.

Last year he saved 15% less.

How much did Alex save last year?

**Question 5 (3 mark/s)**

There are 600 vehicles in a car park.

One-third of them are trucks.

The rest are cars.

One-quarter of the cars are white.

How many white cars are in the car park?

**Question 6 (2 mark/s)**

Susan has some triangular tiles like this:



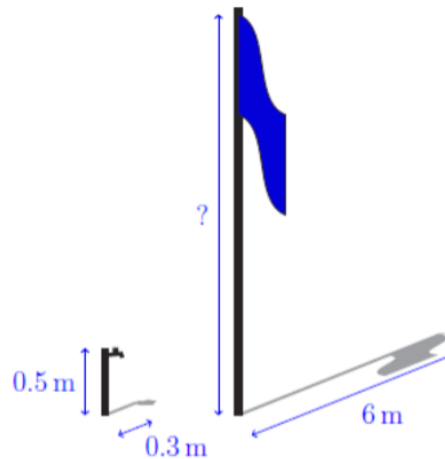
She makes this shape by arranging the tiles, without any gaps or overlaps.



How many tiles does Susan use to make this shape?

**Question 7 (3 mark/s)**

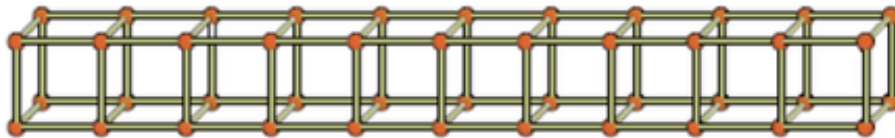
At 10am the school flagpole cast a shadow 6 metres long. Next to the flagpole, the 0.5 metre tall tap cast a shadow of 0.3 metres.



How tall is the flagpole in metres?

**Question 8 (3 mark/s)**

A class has 2016 matchsticks. Using blobs of modelling clay to join the matchsticks tighter, they make a long row of cubes. This is how their row starts.



They keep adding cubes to the end of the row until they don't have enough matches left for another cube.

How many cubes will they make?